

300 Ozark Trail

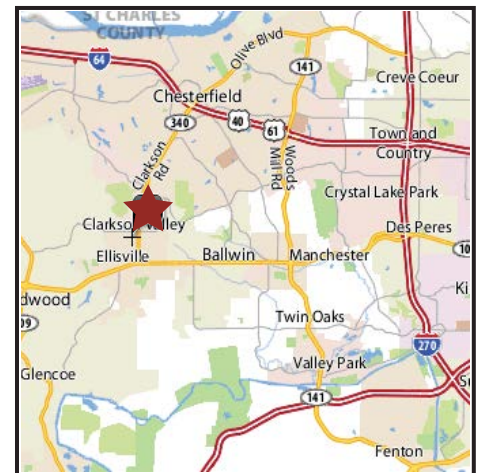
300 Ozark Trail Ellisville (Saint Louis), Missouri 63011



OFFICE SPACE AVAILABLE

PROPERTY HIGHLIGHTS

- Office Building located in Dierberg's anchored, mixed-use shopping center close to residential areas of W. St. Louis County
- Landscaped Interior Atrium
- Full Service Leases
- Build to Suit
- 3 access points (Clayton Rd., Clarkson Rd., Ozark Trail)



For information contact Jim J. Otis: 📞 314-434-4004 ✉ jjotis@otisandclark.com

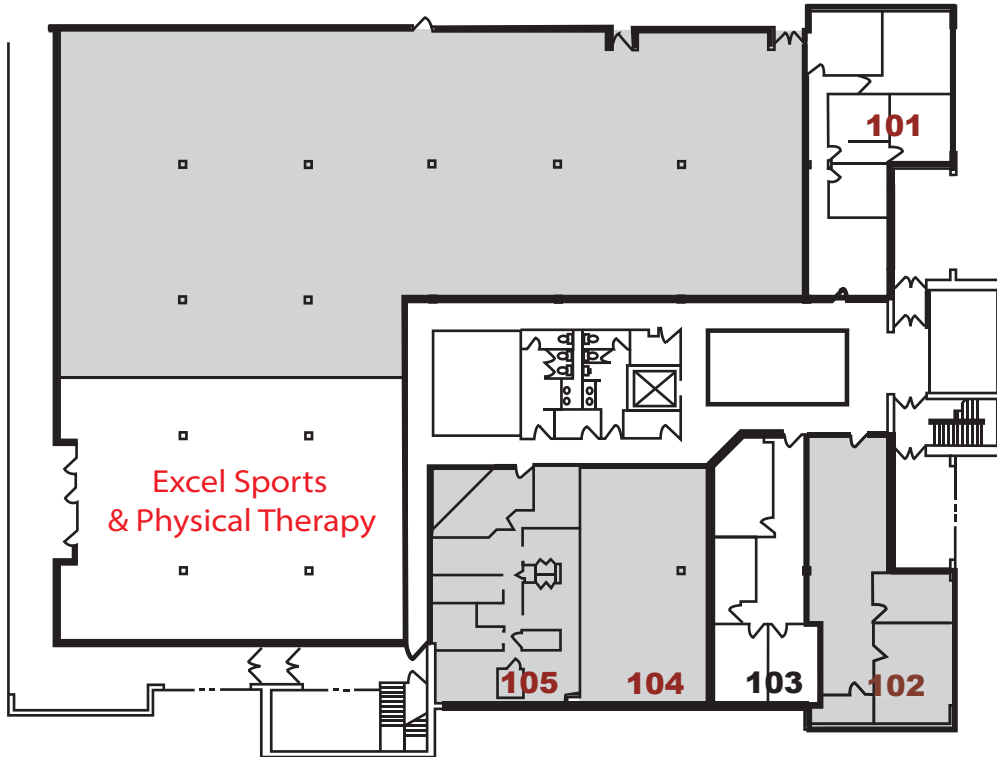
1850 Craigshire Road, Suite 103, Saint Louis, MO 63146
P: 314.434.4004 F: 314.434.4113 www.otisandclark.com



Otis & Clark Properties

300 Ozark Trail

300 Ozark Trail Ellisville (Saint Louis), Missouri 63011



FIRST FLOOR

■ Available for Lease

- Suite 101 - 1,250 sq. ft.
- Suite 102 - 1,250 sq. ft.
- Suite 104 - 1,170 sq. ft.
- Suite 105 - 1,246 sq. ft.

SECOND FLOOR

■ Available for Lease

- Suite 200 - 1,752 sq. ft.
- Suite 201 - 940 sq. ft.
- Suite 202 - 744 sq. ft.
- Suite 212 - 647 sq. ft.
- Suite 216 - 450 sq. ft.
- Suite 218 - 485 sq. ft.
- Suite 222 - 726 sq. ft.
- Suite 223 - 384 sq. ft.
- Suite 224 - 383 sq. ft.
- Suite 226 - 416 sq. ft.



For information contact Jim J. Otis: ☎ 314-434-4004 ✉ jjotis@otisandclark.com

1850 Craigshire Road, Suite 103, Saint Louis, MO 63146

P: 314.434.4004 F: 314.434.4113 www.otisandclark.com



Otis & Clark Properties